

TWO LINEAR

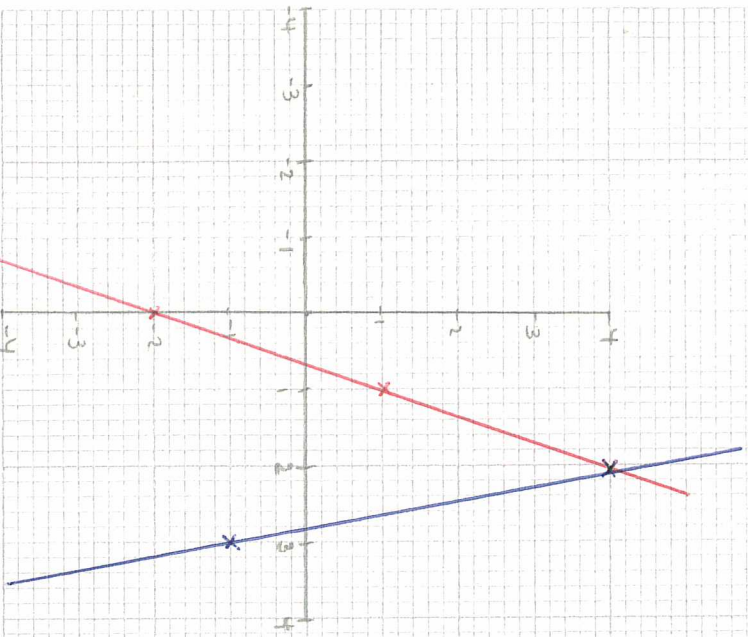
Solve $3x - y = 2$
 $5x + y = 14$

$3x - y = 2$

x	0	1	2	3	4
y	-2	1	4	7	10

$5x + y = 14$

x	0	1	2	3	4
y	14	9	4	-1	-6



• SOLUTIONS are where the graphs cross/ intercept

GRAPHICAL SIMULTANEOUS EQUATIONS

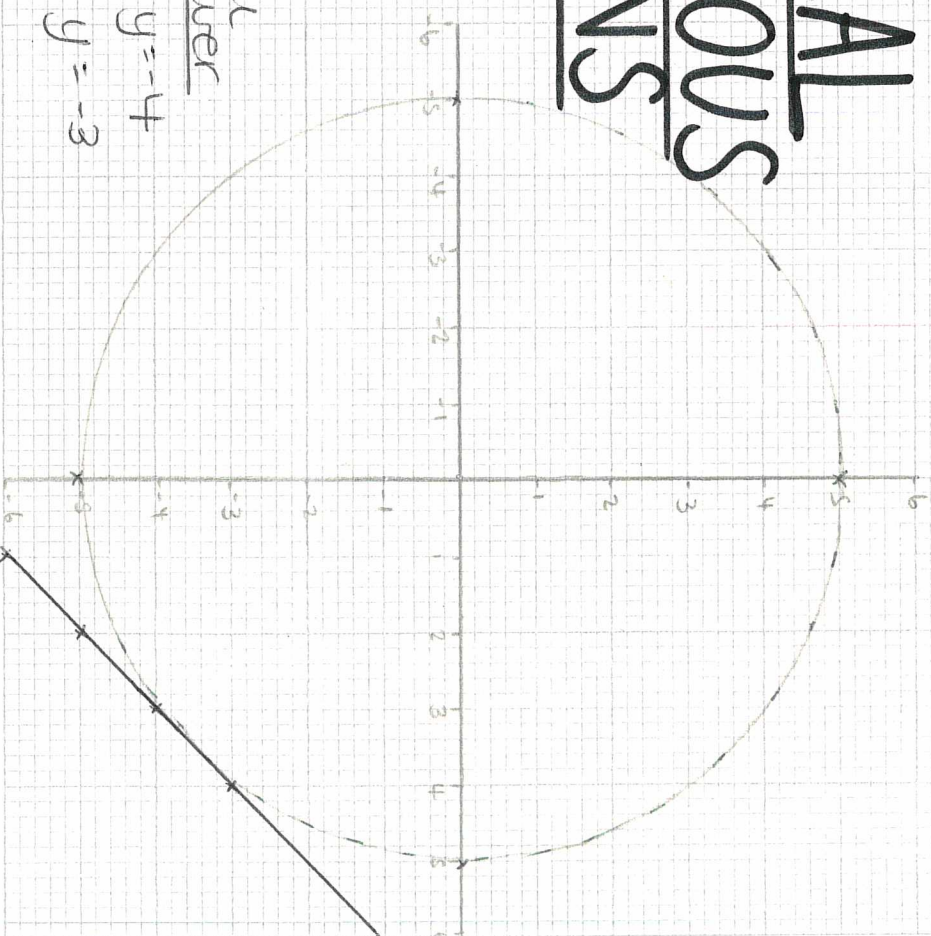
Final Answer
 $x = 2, y = 4$

QUADRATIC AND LINEAR

Solve $x^2 + y^2 = 25$
 $y = x - 7$

x	0	1	2	3
y	-7	-6	-5	-4

circle
 radius = $\sqrt{25}$
 radius = 5



Final Answer
 $x = 3, y = -4$
 $x = 4, y = -3$