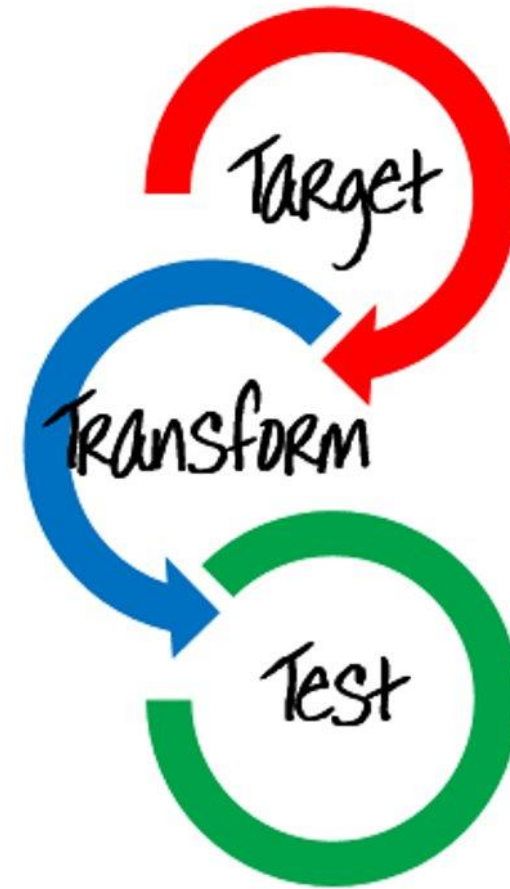


Effective Revision Strategies

Monday 23rd October 2023







REVISION

What revision techniques can learners use?



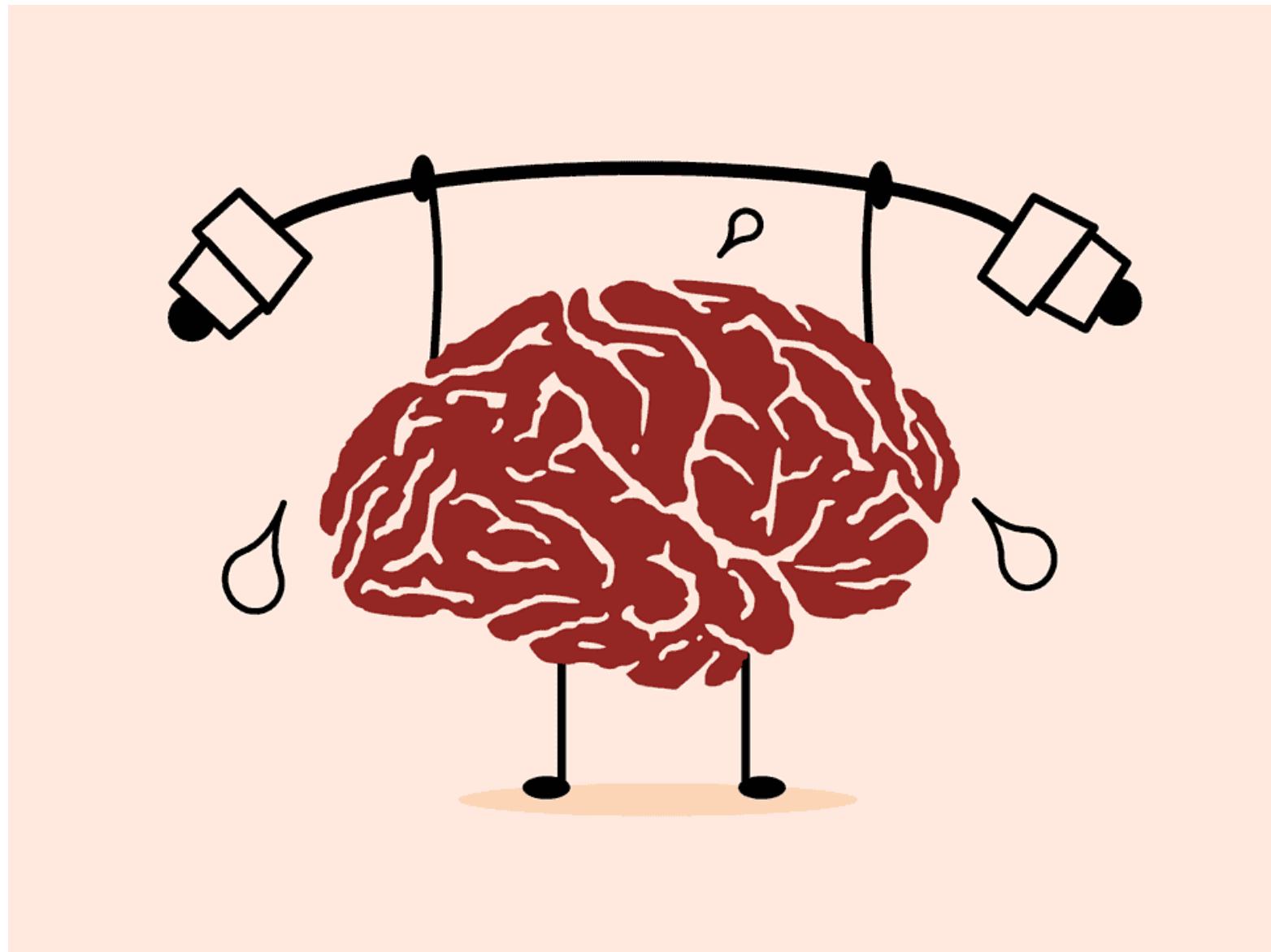
REVISION

What ***effective*** revision techniques can learners use?

**Not all revision
strategies are
equal**

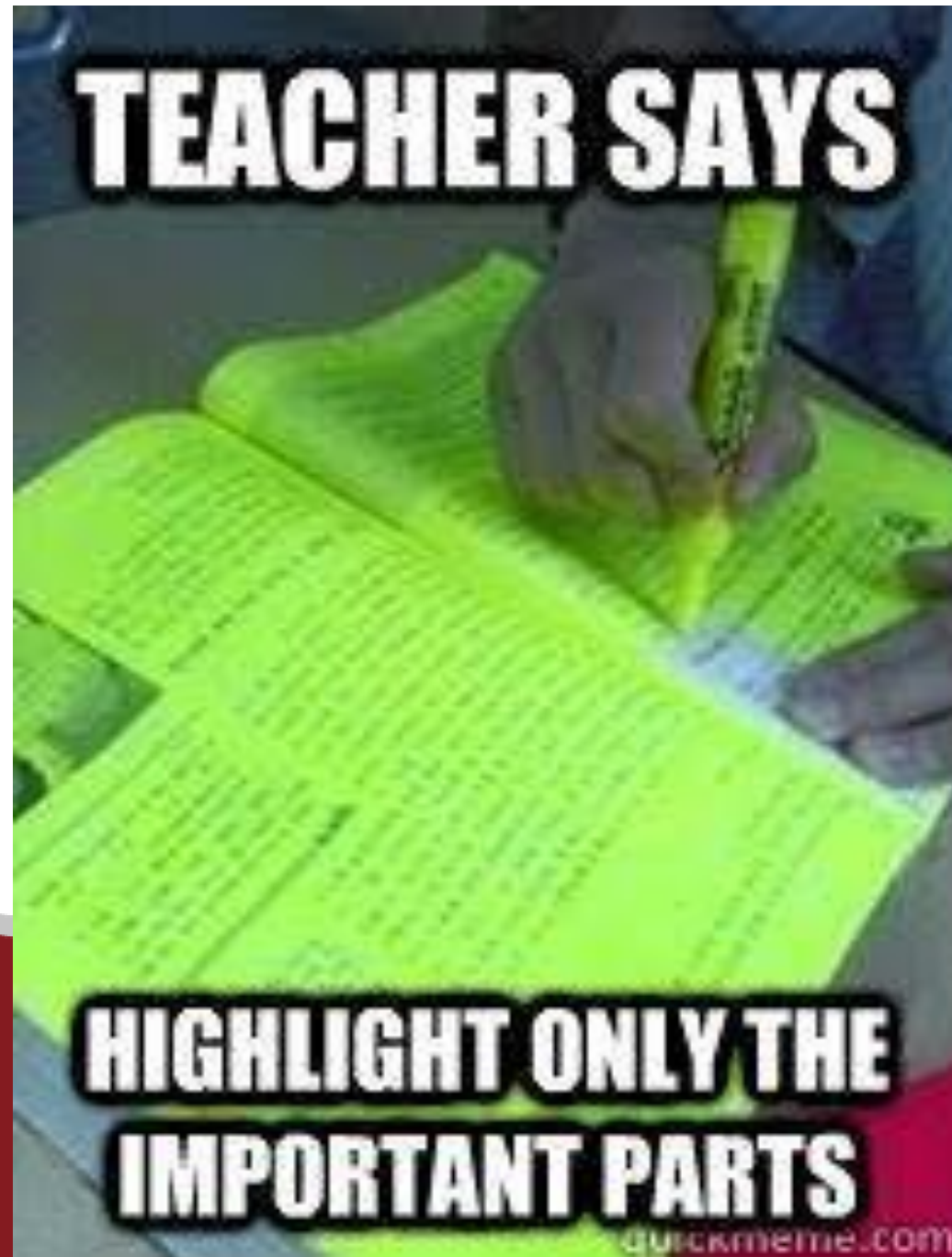
*“Using your memory,
shapes your memory.
Using your memory,
changes your
memory.”*

Professor Robert Bjork



Revision Don'ts

84%



dlands. DY8 3NQ

quickmeme.com

Students who test their knowledge perform better on tests than those who simply study

Proportion of recall on final testing

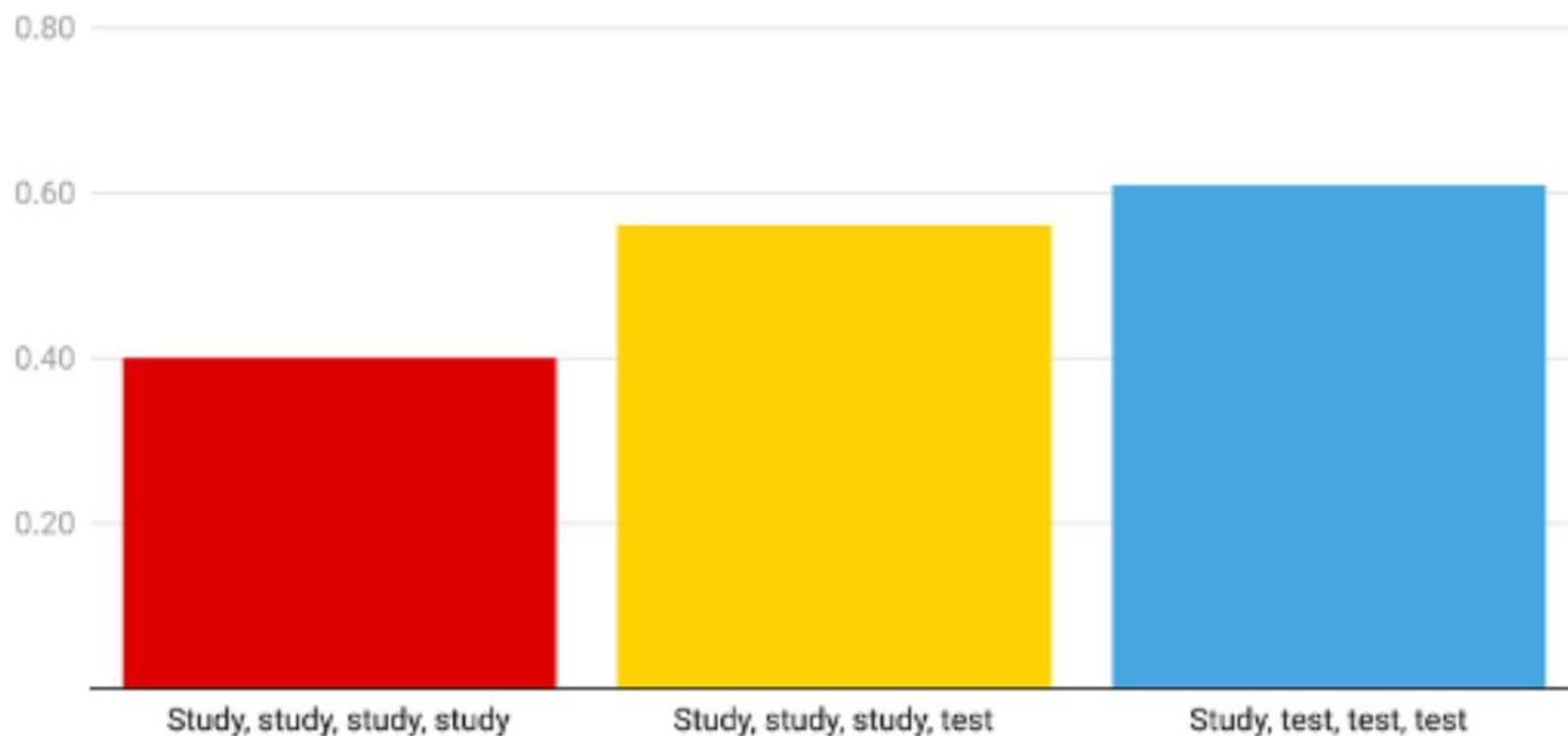


Chart: InnerDrive • Source: Roediger and Karpicke, 2006 • Created with Datawrapper



What is the capital of Croatia?



Answer: Zagreb



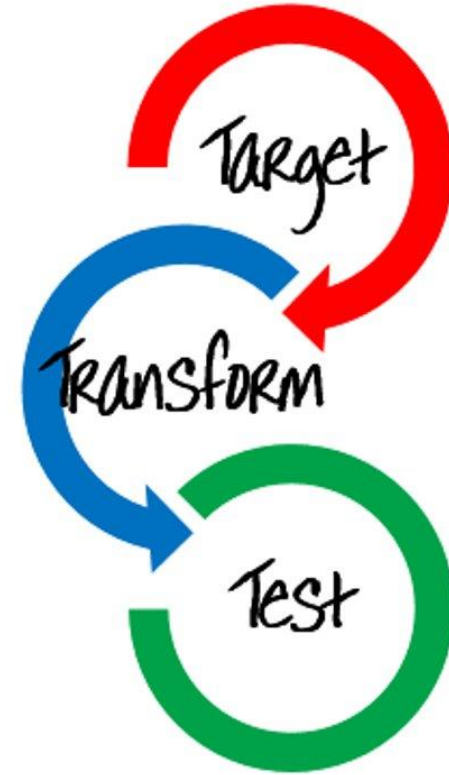
RIDGEWOOD
HIGH SCHOOL

Park Road West, Wollaston, Stourbridge, West Midlands. DY8 3NQ

Tel: 01384 818445

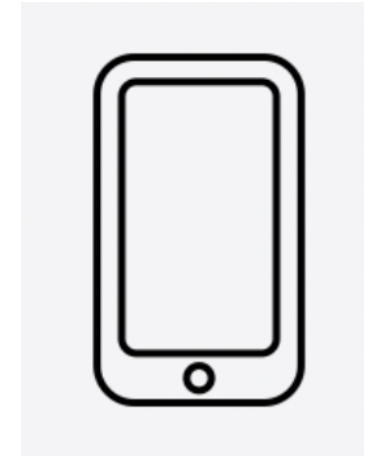
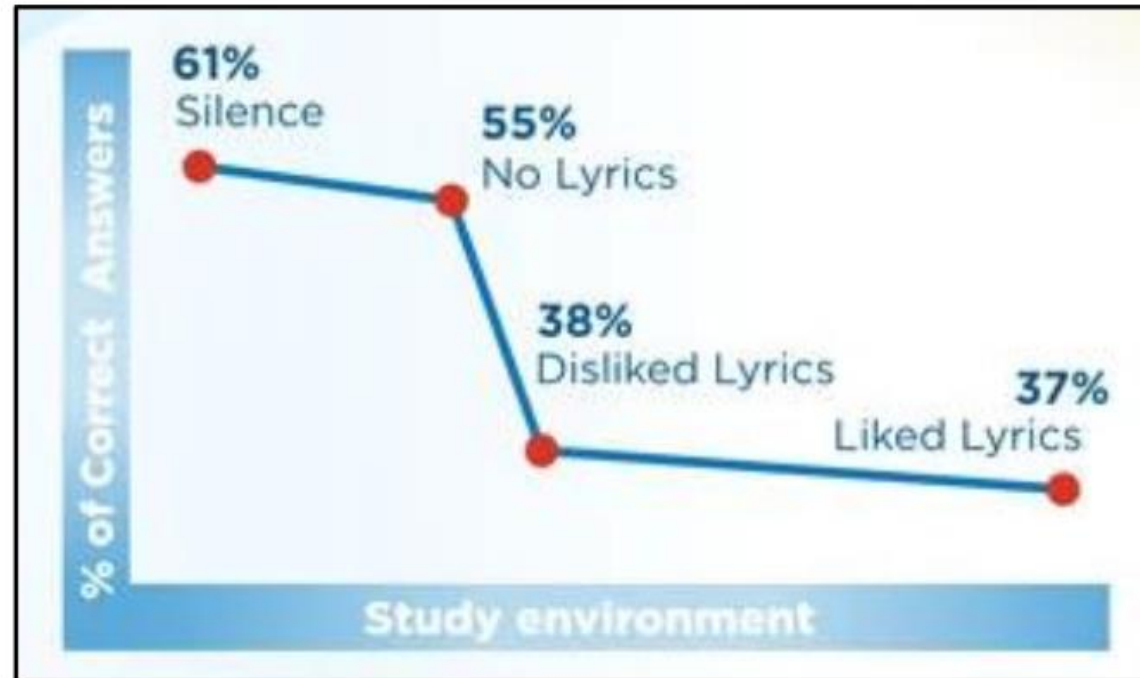
Web: www.ridgewood.dudley.sch.uk

- ✓ Target: Topic checklists
Self-review and rating confidence
Prioritise and organise time
- ✓ Transform: Revision strategies
- ✓ Test: Quizzing
Deliberate practice



	R.	A.	G.
<p>What was public health like in Medieval Britain?</p> <ul style="list-style-type: none"> • Why was public health poor in Medieval towns? • Why did the government play a limited role in public health? • What can we learn from the Black Death about problems? • Where was Medieval public health better and why? 			
<p>Why was Edward Jenner important in the development of medicine?</p> <ul style="list-style-type: none"> • How did Edward Jenner develop the smallpox vaccination? • What was his method and how did it improve on previous ideas? • What opposition did Edward Jenner face and why? • What factors influenced Edward Jenner's development of vaccination? • What was the short-term impact of Edward Jenner's discovery? • What was the long-term impact of Edward Jenner's discovery? 			
<p>What was public health like in 19th century England?</p> <ul style="list-style-type: none"> • Why was public health poor in 19th century Britain? • What can we learn from the cholera epidemics about problems with poor public health? • What was the government's attitude towards public health in the 19th century? • How and why did the government's attitude begin to change? • How and why did public health improve in the late 19th century? 			

Revision Don'ts

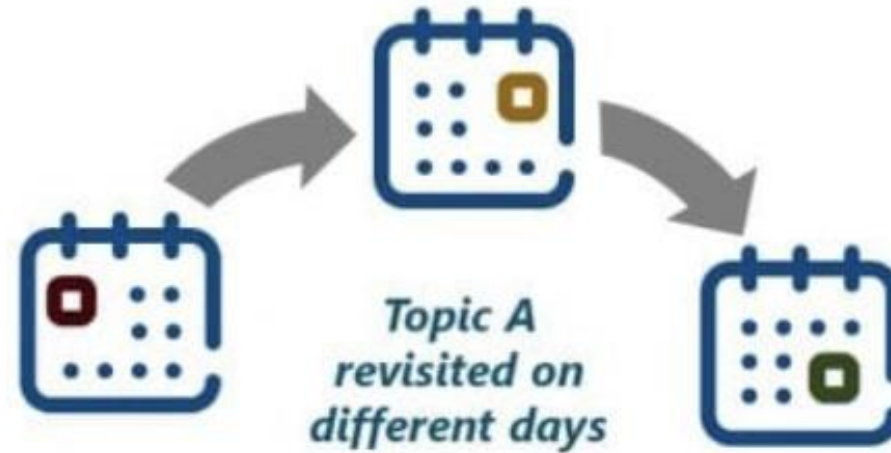


Revision Don'ts

Cramming



The **spacing effect** is about time gap (hours, days, weeks) between revisiting material



RIDGEWOOD
HIGH SCHOOL

Park Road West, Wollaston, Stourbridge, West Midlands. DY8 3NQ

Tel: 01384 818445

Web: www.ridgewood.dudley.sch.uk

Blocked practice

← 9am-10am → ← 10am-11am →




Interleaved practice

← 9am-10am → ← 10am-11am →







IF YOU REALLY WANT
TO DO SOMETHING,
YOU WILL FIND A
WAY. IF YOU DON'T,
YOU WILL FIND
EXCUSE.

BY: JIM ROHN